

Software instructions

This software can be applied to Win2000 ,winXP, win7, win8 and win10. cannot be applied to Mac.

A. Installation instructions

1.Open the CD and see below icons:



2.double-click below icon:



3.The interface as follows:

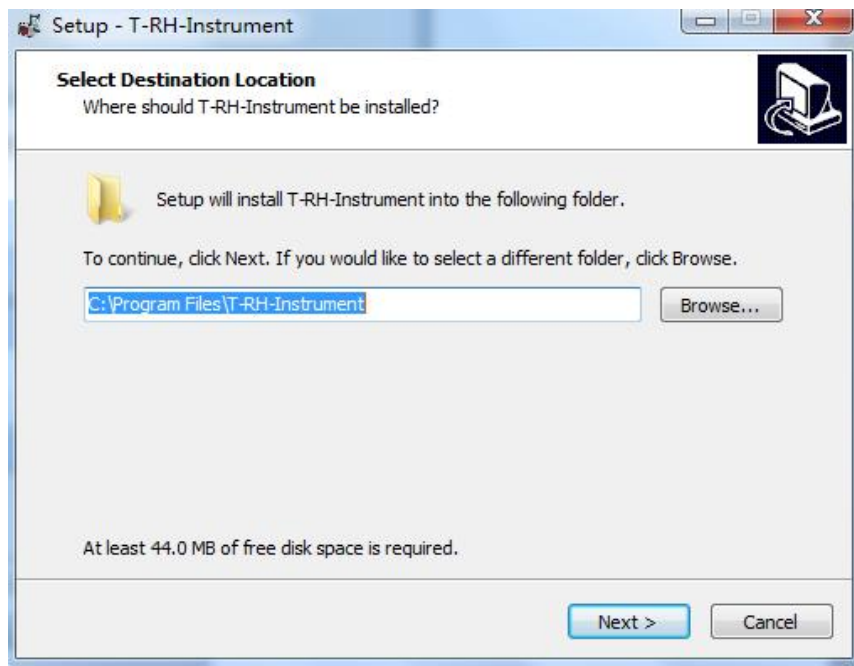


4.Click "Install" and wait for about 1 minutes to finish installation.

5.Then double- click below icon:

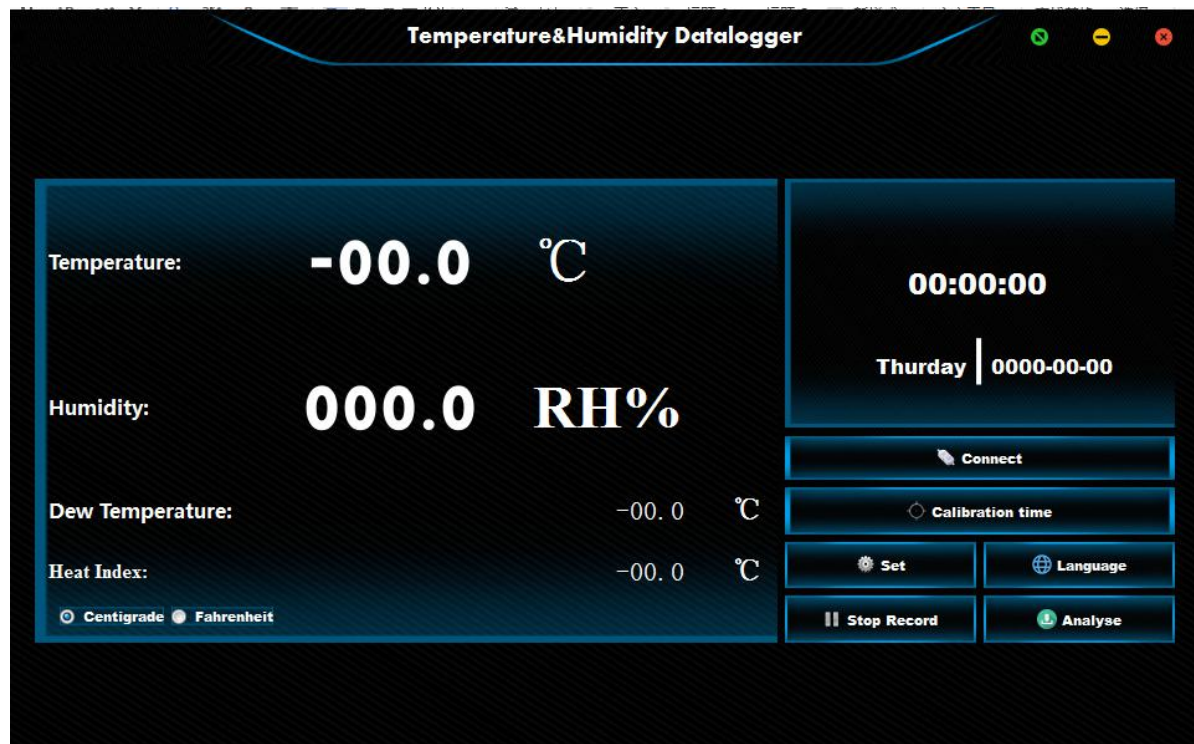


6.Show below interface, Choose the language, then Click “OK”
:

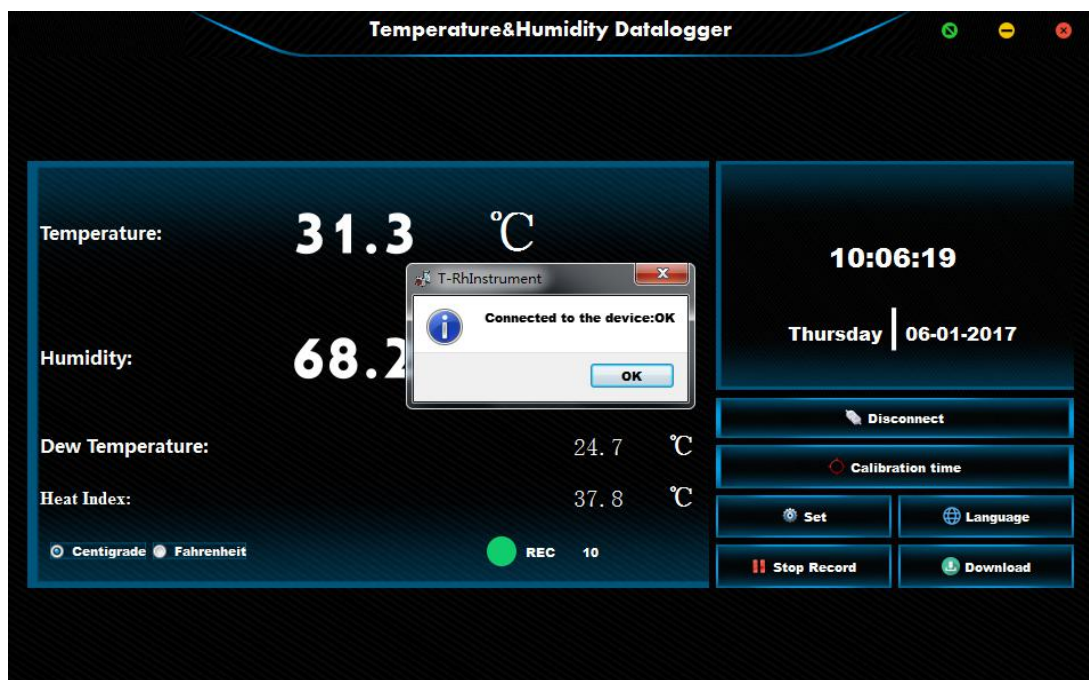


Then click "next" to complete installation

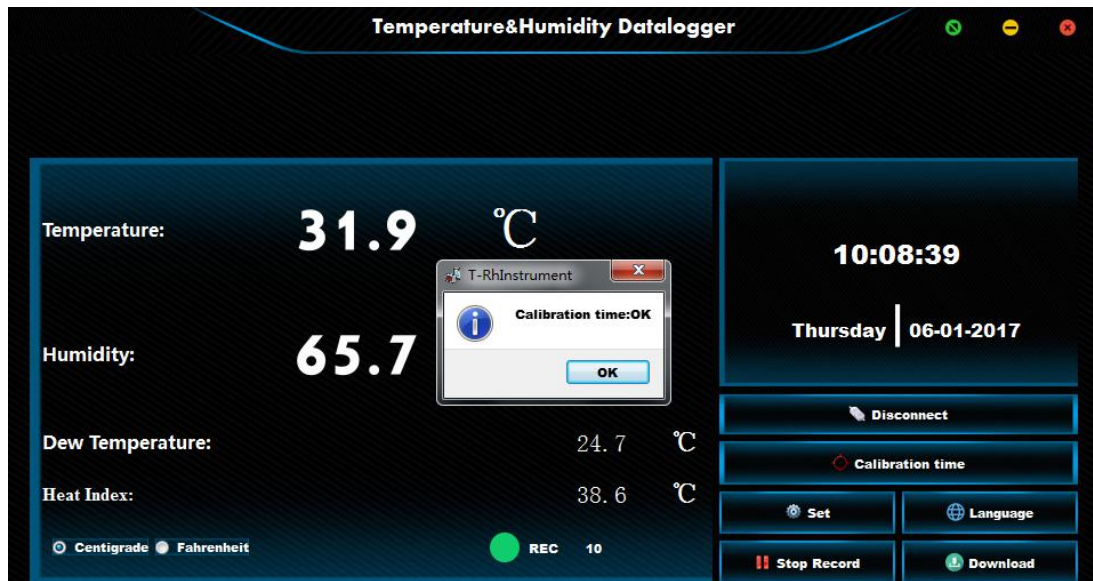
B.Interface instructions :



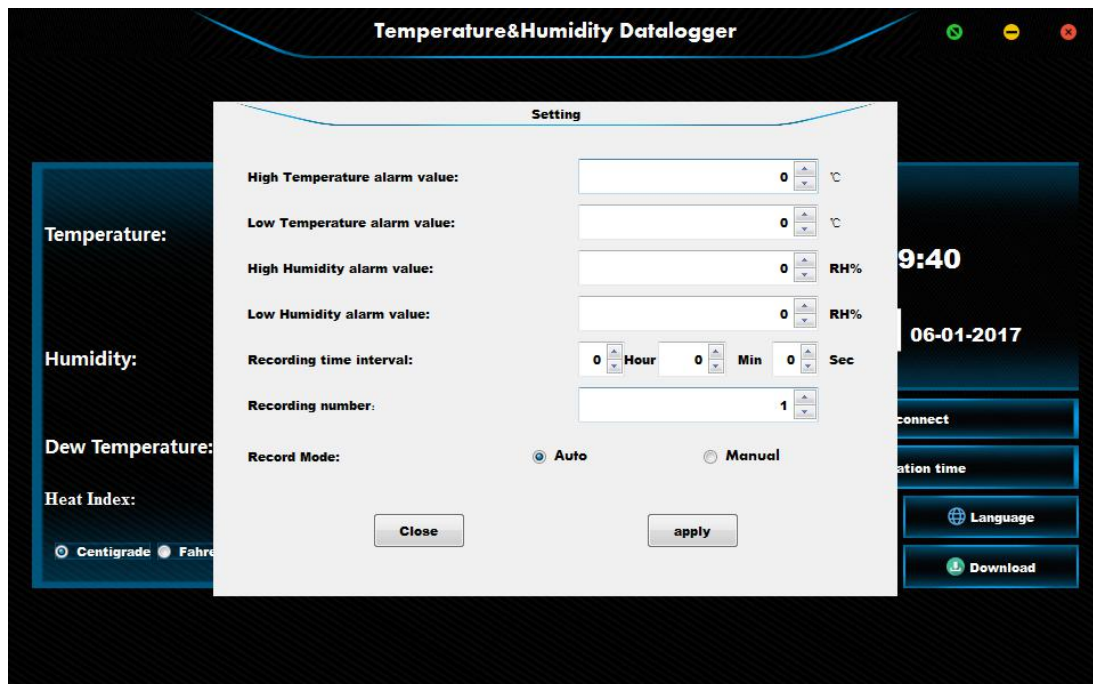
1. “connect” is online connection function. Using the USB cable connect device to computer. then click ”connect “ to show below interface.



2. “calibration time” is time calibration functions. After online connection, click” calibration time” to update the current time.



3. "set" is Set parameter function. Click "set" then enter into below interface .



The setting function included: High/low temperature Alarm, High/Low humidity Alarm. Record interval time (from 1s~24Hours), record times (from 1~20000), choose manual record or Auto record.

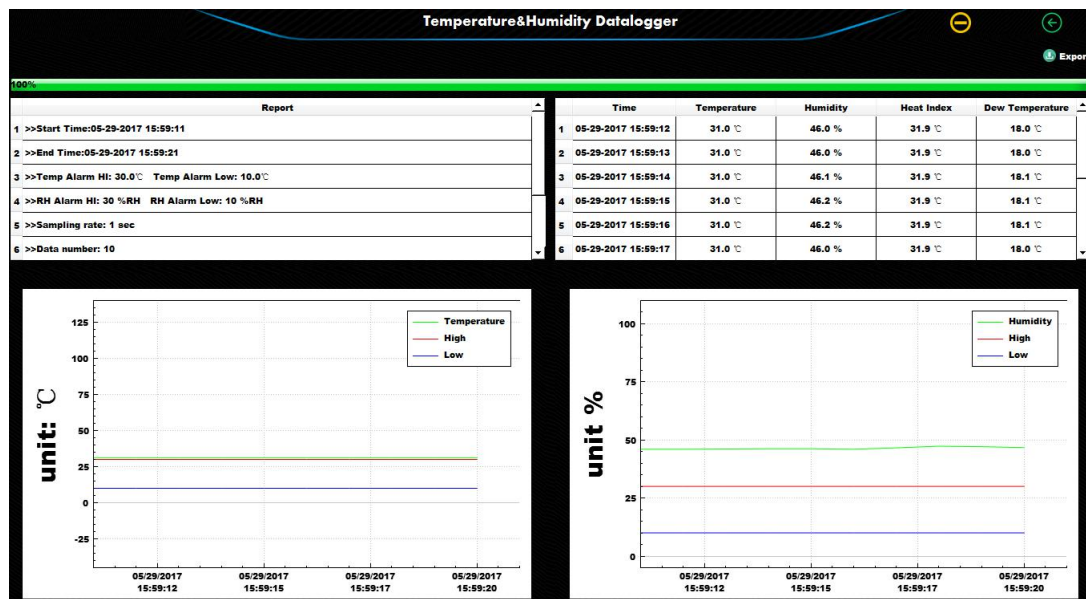
Note: Auto recording function means that when you select the recording mode as "Auto" , click "apply", the meter will start recording immediately

Manual recording function means that when the record mode is "Manual", click "apply" will not immediately record, you need to manually press the instrument "REC" will start recording

4. Language :Switch language between Chinese and English

5.Stop record: stop recording function

6.Download: download datas



Click top right corner"export" could export datas to be "Exel" and TXT" formats